

[5.25 INCH]

ALUMINUM EXTERNAL ENCLOSURE

[USER GUIDE]



The Installation Of External Box

Please read this installation carefully before you use the products.

Precaution:

1. Make sure the jumper setting is "Master" mode.
2. Do not unplug the device while data accessing.

System Requirement:

- Compatible with IBM PC, USB interface included , Windows 98SE/ME/2000/XP operate system.
- MAC computer system MAC OS V8.6 or higher.

Packing include

Main body *1

AC to DC adapter *1

USB cable *1

Disk driver *1

This installation guide & Accessory kit *1

FEATURE

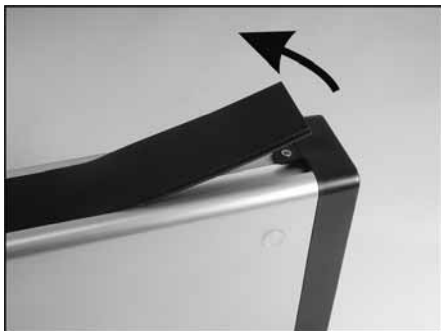
1. Standard USB2.0 high-speed transfer rate.
2. Suitable for all ATAPI 5.25" CD-RW / CD-ROM / DVD-ROM /DVD-RW
3. All aluminum, to enhance heat dissipation.
4. Plug and play / hot swappable.
5. Support Win 98SE/ME/2000/XP/Mac OS 8.6 above.
6. Green LED for power state, red LED for access state (red LED light on when device accessing)

Specifications

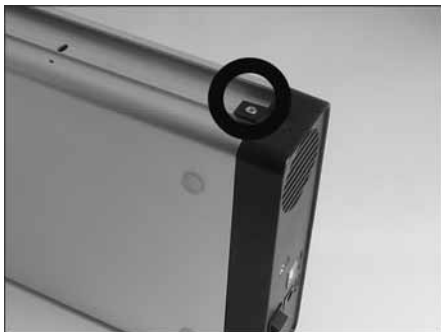
Interface	USB2.0
Operating System	Windows 98SE / ME / 2000 / XP, and Macintosh OS 9.0 or later
Transfer Rate	Up to 480Mbps
Power Supply	AC input: 100 - 240Vac DC output: DC +12V
Size	260(L) X 163(W) X 50(H) mm

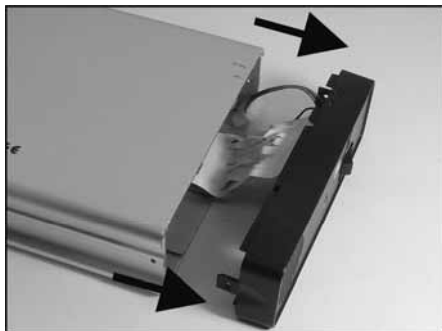
Hardware Installation:

1. Remove the 2 side covers as fig.1



2. Screw the back cover off the box and pull it out with the rear panel as below

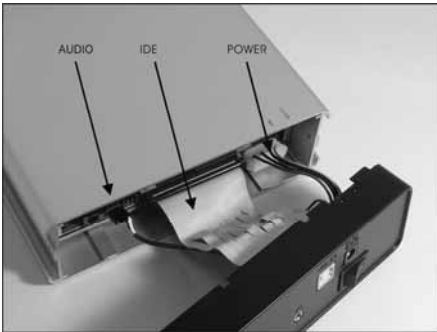




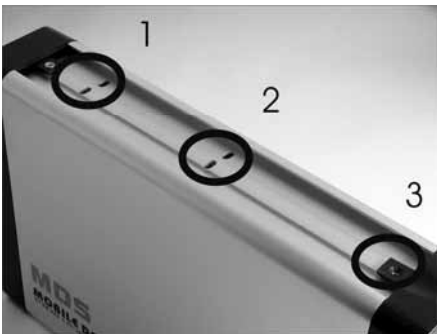
3. Remove the front panel and insert the device to housing as fig.3



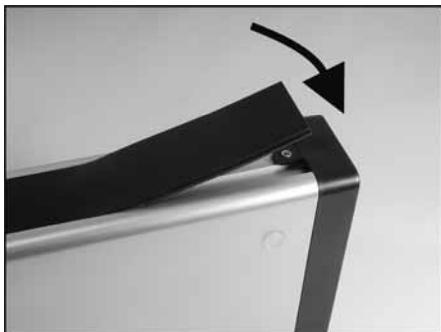
4. Connect the power, audio and IDE cables to the device drive as fig.4



5. Screw the device & rear panel to the aluminum housing.



6. Install the 2 side covers.



7. Connect the power and USB cables to the box, and switch on the power to use.

Driver Installation:

Windows 98SE

1. After plug the external box into, the system will remind you there is a new hardware of USB Storage Adapter add into.
2. Design the driver of the safe path (in the driver), the system will active the installation automatically.
3. After for a while, click "My Computer", USB enclosure will appear the relativity on the PC.

Windows ME/2000/XP

The system already provided support for the software.

MAC OS 8.6/9.x/above

OS 8.6 edition:

1. The Driver is the "GeneUSBIDE_05E3_0702.sit" under the catalogue of the MAC, copy the document to the tope a table and clicks the document out, and then it will occur the document of the driver automatically.
2. Please copy the driver document to the system folder of the PC. --(System Folder) -(extensions).
3. Connect with the USB enclosure

OS 9.X edition:

The system already provides support for the software.

To remove the device:

For Windows 98SE Users

Before you remove your device please wait for “Access LED” on reader stops blinking to prevent data loss.

For Windows ME/2000/XP Users

Please double-click the icon  on the system tray. A dialog box will appear.

Double-click the Generic USB Storage Device to remove the device for preventing from data loss.

Mac OS

You can remove the cable of USB after putting the icon of USB enclosure on the desktop into the trash can.