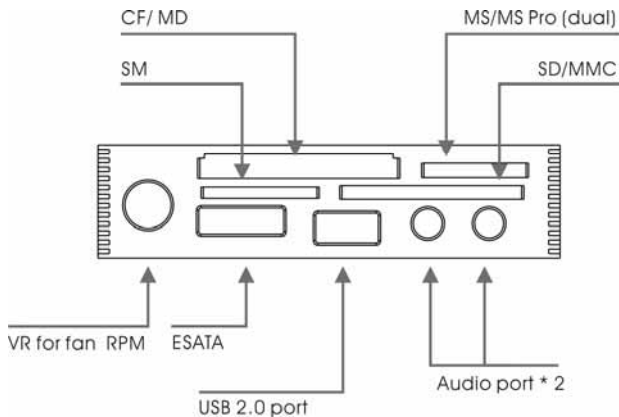


1. Introduction

1.1.Product Overview

The multi-function panel is a new product comes with multi-slot card reader, fan knob and multi I/O panel, user able to install in standard 3.5" device bay. For multi-slot card reader, it provides the most popular memory card. For fan knobs, it can adjust the fan RPM. For multi I/O panel function, it provide a quicker, reliable convenient PC operation environmental .It provide most convenient front cable connection, including USB/eSATA/audio connectors, it's a perfect solution for all kind of PC peripheral.

1.2 Illustration of product



1.3 Package contents

The package should contain the following items:

1. Main body x1
2. Serial ATA cable x 1
3. USB cable x 1
4. Audio cable x 1
5. Cooling fan DC cable x 2
5. Accessory kit x 1
6. User's Guide

2. Feature & Specification

2.1 Feature:

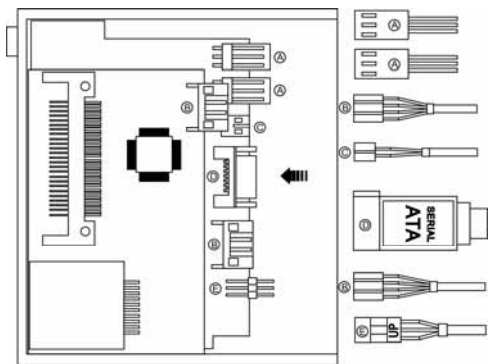
- Hi-Speed USB 2.0 backwards compatible with all USB 1.1 ports
- All 4 memory-slots are active, which allows you to copy data between the different memory cards at the same time.
- Multi-I/O for eSATA/USB/audio ports.
- Fan knob for 2 fan RPM control.
- For desktop internal connectivity.
- USB Mass Storage Class Devices.
- Max Speed will be up to 480Mbit/sec
- Plug & play and Hot Swapping
- Windows 98/98SE/2000/XP and Mac OS 9.x/Mac OS

2.2 Specification:

DC Input	+5V USB bus power / +12V
DC Output	4V – 12V DC
Dimension	102 * 25 * 90 mm (W * H * D)
material	ABS
fan connector	2(3 pin)
Interface of reader	USB 2.0
Card support	Compact Flash Type I/II Micro Drive Memory Stick Memory Stick Dual Memory Stick PRO Memory Stick Dual PRO Smart Media SD miniSD Multi Media Card RS-MMC T-flash (SD card adapter)
OS	Win 98se/me/2000/XP, Mac OS 8.6+

3.Installation:

1. Carefully insert the drive into 3.5" drive bay.
2. Fasten the drive into the carrier with screws.
3. Attach the 2 4-pin USB cables into motherboard's USB pin header.
4. Insert the audio cable into PC Bracket through the opening of L type bracket.
5. Attach the SATA cable into MB's SATA connectors.
6. Attach the USB/audio/SATA cable into PCB pin header as below. (Make sure the position accurate by "UP" label)



- A: Fan connector
- B: USB connector
- C: DC 12V
- D: SATA (transfer to eSATA)
- E: Audio

Description of USB pin header

Pin of Reader	Pin of Motherboard	Description
VCC	VCC / +5V	USB +5V power
D-	D- / USB-	Negative Data
D+	D+ / USB+	Positive Data
GND	GND / Ground	Ground

4.Driver installation

4.1. Minimum System Requirements:

Windows

Pentium class PC with USB support
Windows 98SE, 2000, ME, XP
CD-ROM drive
USB 2.0 port required from Hi-Speed transfer.

Macintosh

Macintosh computer with USB support
Mac OS 9.1.x and 9.2.x, OS X v10.1.2+
CD-ROM drive
USB 2.0 port required from Hi-Speed transfer

4.2. Minimum System Requirements:

4.2.1. Installation for Windows 98/SE/2000

1. Insert the driver CD into the CD-ROM drive.
2. Click the CD-ROM drive icon.
3. Follow the step of "Install Wizard" to install the "USB Card Reader Driver".
4. Click "Yes" to reboot the system.
5. Plug your card reader into USB port and Windows 98SE will detect it automatically.
 - a. The pop-up window "Find new Hardware" will come out.
 - b. Wait for Windows 98SE to configure the card reader. When the installation (of the card reader driver) is successful, this pop-up window will disappear automatically.
 - c. Open "my computer", you'll see removable

- drives installed in your computer, then the installation is completed.
- d. The installation is completed.

4.2.2 Installation for Windows ME/XP.

This card reader is a driver-free device for Windows ME/XP. You don't have to install any driver and can plug into USB port directly.

Windows ME/XP will detect and install all the associated files automatically.

4.3 Uninstall Driver:

1. Please run the setup process again to uninstall the driver.
2. Follow the on-screen instruction to complete the process.
3. System would ask you to restart the computer, please choose "Yes, I want to restart my computer now" to restart your PC, the uninstall will be done.

4.4. Remove Device:

For Windows 98/98SE Users

- Before you remove your flash cards or reader, please wait for "Access LED" on reader stops blinking to prevent data loss.

For Windows ME/2000/XP Users

- Please double-click the icon



on the system tray. A dialog box will appear.

Double-click the Generic USB Storage Device to remove the device or cards for preventing from data loss.